

IEC Appliance Inlet C8 polarized with Line Switch 1-pole



CMF2

C8 polarized



70° C

**Description**

- Panel Mount:  
Screw-on mounting on PCB, from top or bottom
- 2 Functions:  
Appliance Inlet Protection class II, Line Switch 1-pole
- For PCB mounting
- Alternative: unpolarized version or protection class I [CMF1](#), [CMF4](#); [CMF3](#), [CMF6](#)

**Characteristics**

- Easy mounting with center bolt and snapper or screwed on PCB or housing
- Electrical connection done on the PCB
- Bi-positioning of the switch from left or right side, Standard CMF with switch on right side
- With or without rear-side insulation cover
- Qualified for use in equipment according IEC/EN 60950

**Other versions on request**

- Line switch with other rocker marking
- Line switch on left of inlet

**References**

[General Product Information](#)

**Weblinks**

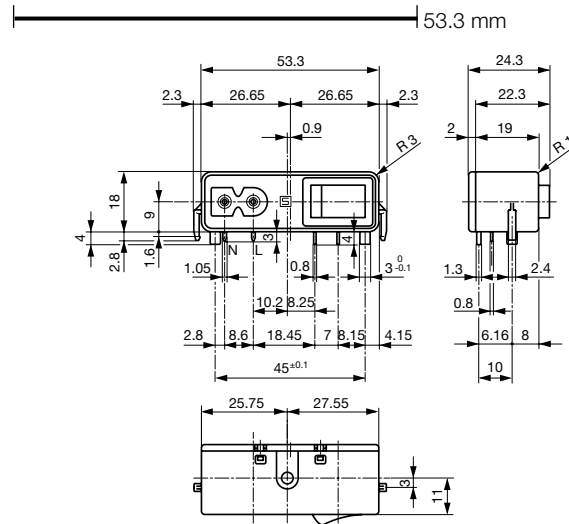
[Approvals](#), [RoHS](#), [CHINA-RoHS](#), [Mating Connectors](#), [e-Store](#), [Distributor-Stock-Check](#), [Accessories](#)

**Technical Data**

Ratings IEC	2.5 A / 250 VAC; 50 Hz
Ratings UL/CSA	6 A / 125 VAC; 60 Hz
Dielectric Strength	> 2.3 kVAC between L-N > 2.8 kVAC between L/N-PE (1 min/50 Hz)
Allowable Operation Temp.	-25 °C to 70 °C
Degree of Protection	from front side IP 40 acc. to IEC 60529
Protection Class	Suitable for appliances with protection class 2 acc. to IEC 61140
Terminal	PCB 1.6 mm
Material: Housing	Thermoplastic, black, UL 94V-0

Appliance Inlet	C8p following IEC/EN 60320-1, UL 498, CSA C22.2 no. 42 (for cold conditions) pin-temperature 70 °C, 2.5 A, Protection Class 2
Line Switch	Rocker switch 1-pole, non-illuminated, acc. to IEC 61058-1 <a href="#">Technical details</a>

## Dimensions

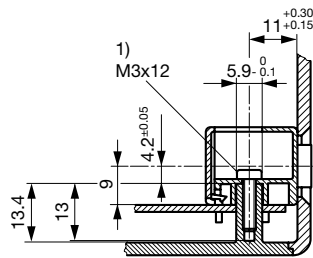
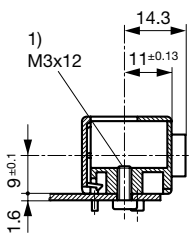


with insulation cover

The size of the mounting cut-out can be selected as required.

Fixation on PCB or housing from below

Fixation on PCB or housing from above

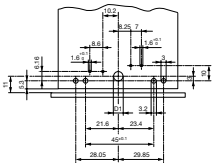


1) self tapping screw

1) self tapping screw

## Drilling diagrams

CMF1 and CMF2 (C8)



## Variants

Connectors	Mounting side	Cover	Ground terminal	Ground terminal direction	Order Number
C8p	from below		-	-	CMF2.1031.12
C8p	from below	●	-	-	CMF2.1131.12
C8p	from top		-	-	CMF2.1011.12
C8p	from top	●	-	-	CMF2.1111.12

Packaging unit 50 Pcs

## Mating Outlets/Connectors

### Category / Description



Power Supply or Interconnection Cord Overview complete

Divers Power Supply and Interconnection Cords 2.5 A

CS02.0221.150

Power Supply or Interconnection Cord further types to CMF2, CMF5